



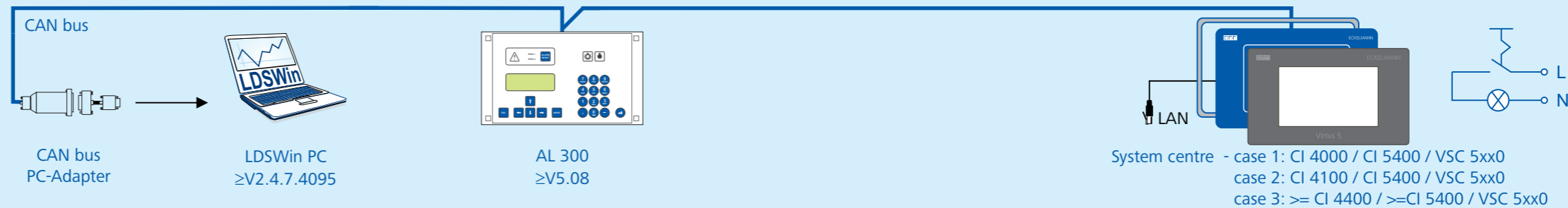
System with store computer CI 3000 / CI 3100 with possible installed E\*LDS components



Action, if one of this E\*LDS components are present in the system !

	<b>1. LDSWin</b> Software update necessary, current software must be installed!	<b>2. AL 300</b> Firmware update necessary, current EPROM $\geq$ V5.08 must be installed!	<b>3. Combi Gateway</b> Any use with a CI 4x00 / CI 5x00 is not provided!  Case 3: CI 3x00 with ombi Gateway Remove Gateway & order CI 4400 / CI 5400 Ord. No: KGLCI4400E / KGLUP4454E	<b>4. Store computer</b> Case 1: CI 3000 without compact ctr. order CI 4000 / CI 5400 Order No: KGLCI4000E / KGLCI4400E  Case 2: CI 3x00 with compact ctr. order CI 4100 / CI 5400 Order No: KGLCI4100E / KGLUP4454E	<b>5. Mounting frame</b> The construction of the mounting frame has changed!	<b>6. Front switch</b> If the front switch of the CI 3000/CI 3100 (terminal 1/2) are used, an alternative solution must be realised e.g. use a separat 1 pole switch in the cabinet door.
No further steps necessary	Order software! Call us.	Order EPROM! Order No: PROMELIAL1				
			Replacement details on page 2	Order mounting frame! Order No: KGLRAHMEN2	Order switch! e.g. EATON M22-WRK	

System after the replacement through the system centre CI 4x00/CI 5x00/VSC 5xx0



E\*LDS Support



[www.eckelmann.de/elds](http://www.eckelmann.de/elds)



Free download  
Version  $\geq$ V2.4.7.4095  
[https://edp.eckelmann.de/edp/lds/\\_6YCuxJxHGf](https://edp.eckelmann.de/edp/lds/_6YCuxJxHGf)



Operating instruction  
Configuration AL 300  
[https://edp.eckelmann.de/edp/lds/\\_l6x6nQYvsu](https://edp.eckelmann.de/edp/lds/_l6x6nQYvsu)



Operating instruction  
Configuration  
[https://edp.eckelmann.de/edp/lds/\\_rLK1havnt1](https://edp.eckelmann.de/edp/lds/_rLK1havnt1)

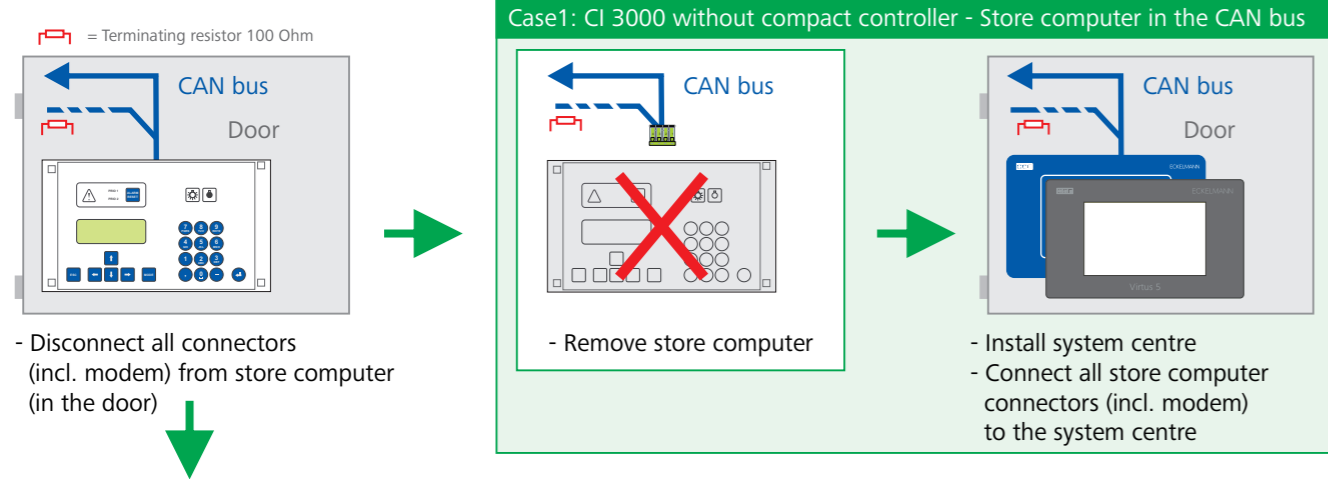




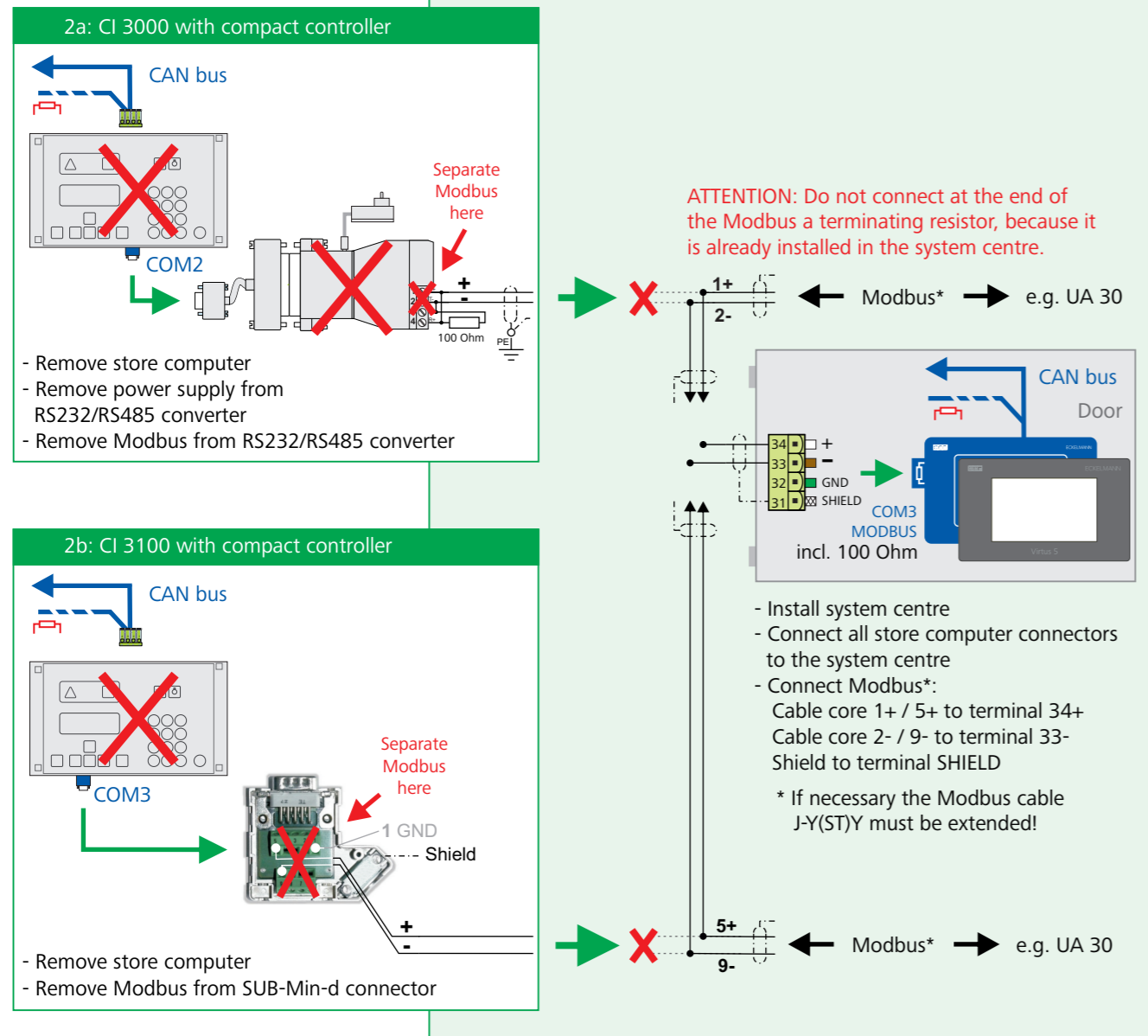
# Possible replacements - Wiring notes

Step 1: Remove power supply from store computer and involved controllers

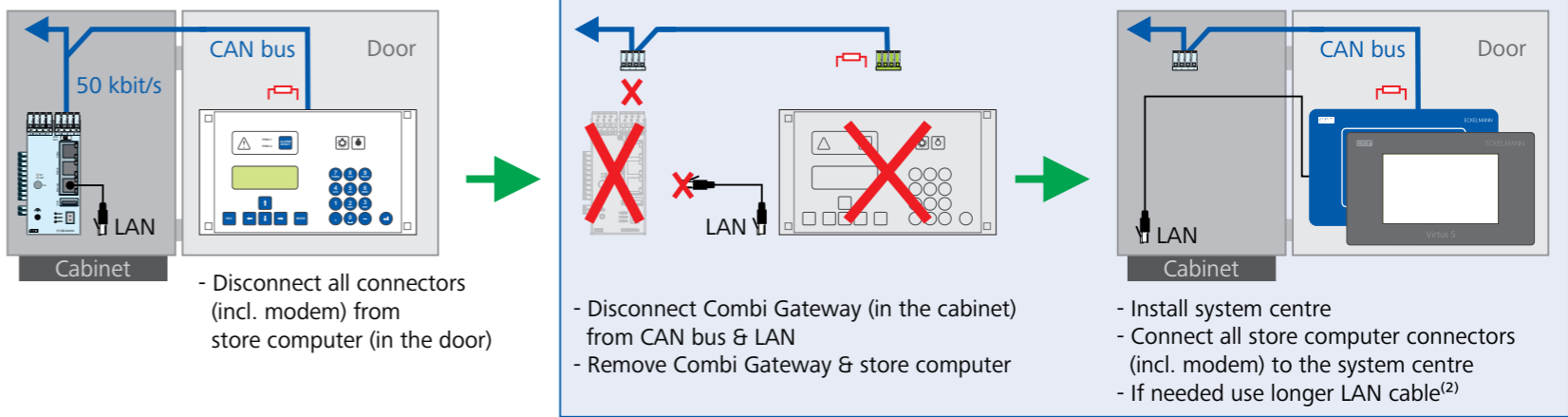
Step 2: Replace store computer through system centre. The following cases 1..3 are possible:



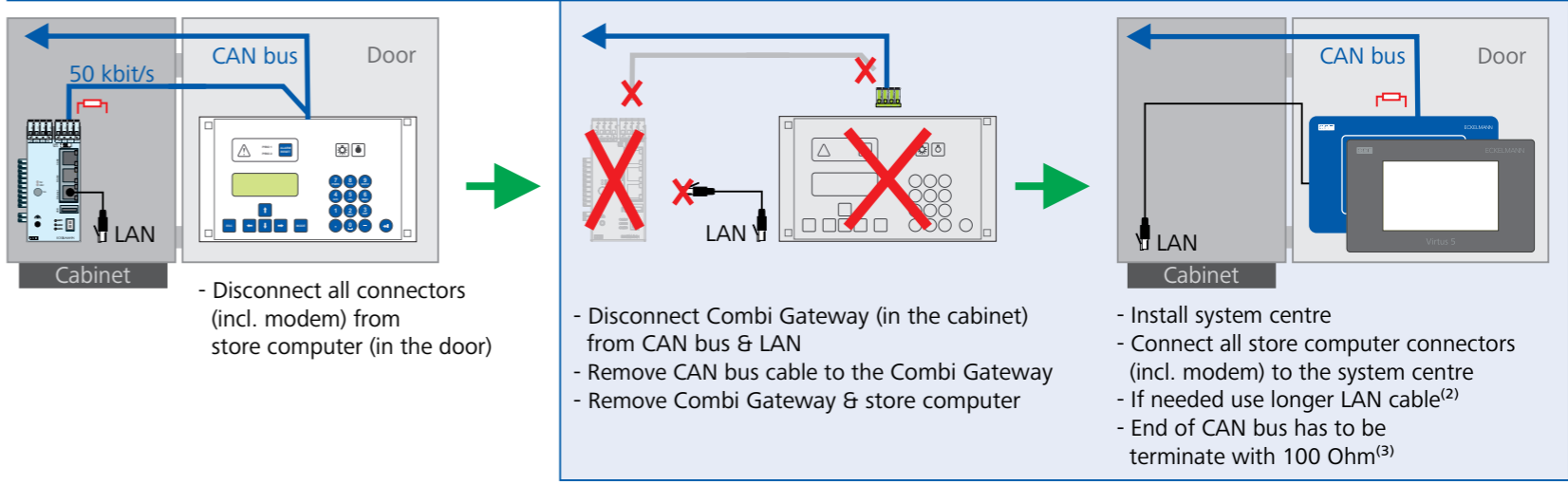
## Case 2: CI 3000/CI 3100 with compact controller - Store computer in the CAN bus



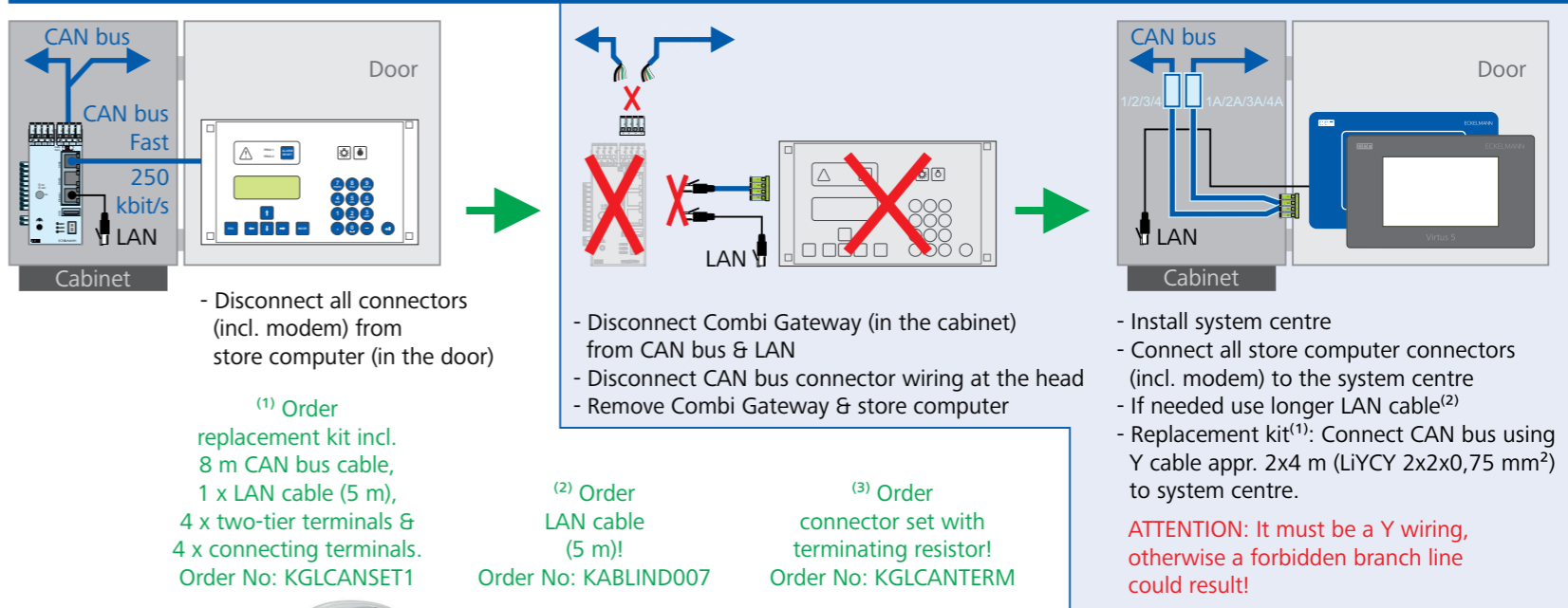
## Case 3a: Combi Gateway in the CAN bus - CAN bus connection = Standard (Data transmission rate 50 kbit/s)



## Case 3b: Combi Gateway at the end of the CAN bus - CAN bus connection = Standard (Data transmission rate 50 kbit/s)



## Case 3c: Combi Gateway in the CAN bus - CAN bus connection = Fast (Data transmission rate 250 kbit/s)



Step 3: Connect power supply to system centre and involved controllers

Step 4: System centre configuration:

